



### DESCRIPTION

A miniature pressure switch with high proof pressures ideal for mobile and other harsh applications. It is a well sealed design that offers ingress protection up to IP68 when paired with the flying lead option. It is offered with a variety of mechanical and electrical terminations for easy integration.

### FEATURES

- Creep / Blade contact switch
- Diaphragm/piston combination
- High ingress protection
- Compact body
- Gold contact available

### APPLICATIONS

- Industrial tools
- Garbage trucks
- Brake pressure switch

### Specifications

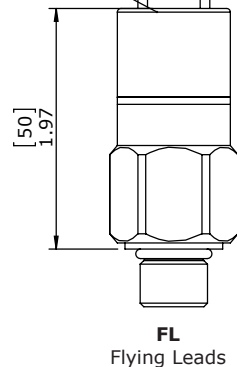
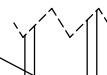
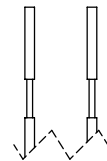
Electrical	100 VA, 42 VDC, Max 4A Optional: Gold Contact
Switch Type	Blade Contact
Protection	Exposed Terminals - IP00 (IP68 Available)
Media Temperature Range	Nitrile: -20°F to 180°F (-29°C to 82°C) Viton: 23°F to 248°F (-5°C to 120°C) HNBR: -20°F to 248°F (-29°C to 120°C) EPDM: -20°F to 248°F (-29°C to 120°C)
Ambient Temperature Range	-40°F to 248°F (-40°C to 120°C)
Mechanical Life Expectancy	1,000,000 Cycles @ 1000 PSI (69 BAR)
Diaphragm Material	Standard: Nitrile Optional: Viton, EPDM, HNBR
Housing Material	Zinc Plated Steel
Maximum Overpressure	9000 PSI (600 BAR)
Repeatability	+/- 3% of full set point range at 20°C (68°F) SKBA-1 model, +/- 1.5 psi
Weight	0.16 lbs (0.07 kg)

### Pressure Range

Model	Adjustment Range	
	PSI	BAR
1	5 - 20	0.3 - 1.4
2	20 - 120	1.4 - 8.2
3	90 - 250	6.2 - 17
4	250 - 950	17 - 65
5	700 - 1900	48 - 131
6	1000 - 3000	69 - 206

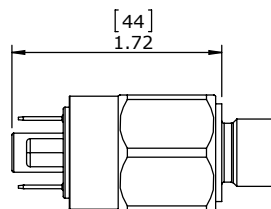
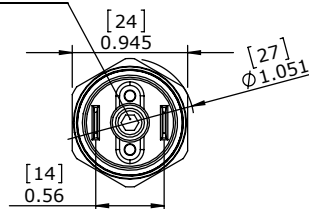
IP68 CAP IS STANDARD WITH FLYING LEADS OPTION

A REMOVABLE PLUG IS PROVIDED FOR ADJUSTABLE MODELS TO ACCESS THE ADJUSTMENT SCREW



### Dimensions

1/8" ALLEN WRENCH ADJUSTMENT SCREW



SP  
1/4" Spades

FL  
Flying Leads

### Wiring Code

CONTACT	FLYING LEADS	FLWF / FLWM WEATHERPACK	FLDR / FLDP DEUTSCH RECEPTACLE / PLUG
COMMON	BLACK	PIN A	PIN 1
NORMALLY CLOSED	BLACK	PIN B	PIN 2
NORMALLY OPEN	BLACK	PIN B	PIN 2

## Ordering Information

### Field Adjustable

**SKBA** - <sup>1</sup>**2** - <sup>2</sup>**2M** - <sup>3</sup>**B** - <sup>4</sup>**SP** - <sup>5 (Optional)</sup>**1**

### Factory Preset

**SKBF** - <sup>1</sup>**30F** - <sup>2</sup>**2M** - <sup>3</sup>**B** - <sup>4</sup>**SP** - <sup>5 (Optional)</sup>**1**

## 1 - Pressure Selection:

Field Adjustable - Select Model Code

Insert set point value XXX followed by: R, F, BR, or BF

Model	Adjustment Range	
	PSI	BAR
<b>1</b>	5 - 20	0.1 - 1.4
<b>2</b>	20 - 120	1.4 - 8.2
<b>3</b>	90 - 250	6.2 - 17
<b>4</b>	250 - 950	17 - 65
<b>5</b>	700 - 1900	48 - 131
<b>6</b>	1000 - 3000	69 - 206

OR

Set Point	Direction	Description
XXXX	<b>R</b>	PSI Rising Pressure
	<b>F</b>	PSI Falling Pressure
	<b>BR</b>	BAR Rising Pressure
	<b>BF</b>	BAR Falling Pressure

## 2 - Thread Options:

- 2M** - 1/8 NPT male
- 4M** - 1/4 NPT male
- 2G** - 1/8 BSPP male, G1/8
- 4G** - 1/4 BSPP male, G1/4
- 4S** - 7/16-20 SAE male, with O-ring seal
- 6S** - 9/16-18 SAE male, with O-ring seal
- M10** - M10 X 1.0 male (to be used with seal ring or crush washer, not supplied)
- M12** - M12 X 1.5 male (to be used with seal ring or crush washer, not supplied)

## 3 - Circuit:

- A** - SPST (Normally Open)
- B** - SPST (Normally Closed)

## 4 - Electrical Termination:

- FL** - Flying Lead 18" long, 18 AWG, IP68 cap is standard with this option
- FLWF** - Flying Lead Weatherpack connector, female, Tower, 10" long leads
- FLWM** - Flying Lead Weatherpack connector, male, Shroud, 10" long leads
- FLDP** - Flying Lead Deutsch connector, plug, 10" long leads
- FLDR** - Flying Lead Deutsch connector, receptacle, 10" long leads
- SP** - 1/4" Spade

## 5 - Options (Omit if not required):

- 1** - Viton® Diaphragm
- 2** - EPDM Diaphragm
- 4** - HNBR Diaphragm
- 7** - Gold Contact, 0.4 VA, 30 VDC
- 20** - Seal Adjustment Screw
- 30** - Rubber Boot - Removable (Excludes IP68 Cap if selected)
- OC** - Oxygen Cleaned
- SR** - Snubber



Note: Please see page 63 for other available options